

# The EDAN Nano Mobile App Features



Auto B-Line



Fast/eFast  
Blue Protocol



B/C/PW  
Auto Optimization



Auto Trace



Dual Imaging



User-Defined  
Preset



Body Mark



Measurement



Screen Switching



Multi-Language



eLearn Guidance



DICOM Transfer

# Imaging Modes



# Ultrasound in Your Pocket Always on the Go

## EDAN Nano C5 EXP

Diagnostic Ultrasound System





# EDAN Nano C5 EXP

Diagnostic Ultrasound System

## Distinctive Design

The remarkable new EDAN Nano ultrasound system delivers outstanding imaging quality with intelligent workflow in a pocket size design – making it an ideal choice for point-of-care ultrasound.

### Always Ready

- Lightweight and pocket-sized, easy to carry everywhere
- Work on Android smartphones and tablets
- Support Wi-Fi and cable connection as user preferred
- Qualified for emergency medical service
- Configurable Cart and carrying bag for various application scenarios

### Simple but Reliable

- IP67 dustproof and waterproof, easy to clean and disinfect
- Type-C quick charging support ultra-long scanning time
- Low Power Consumption for long duration
- Ergonomic design with 3 user-defined button, easy to operate

## The Virtue of Value

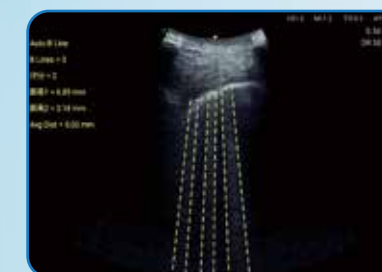
### Definitive image quality

Experience the future of medical imaging with our handheld ultrasound solution. Its sleek and intuitive interface, coupled with state-of-the-art features, ensures efficient and accurate assessments across various clinical settings. From clinics to emergency response scenarios, our device revolutionizes point-of-care diagnostics, enabling informed decision-making and optimizing patient outcomes.

- Abdomen
- MSK
- Obstetrics
- Nephrology
- Bladder
- Gynecology
- FAST
- Anesthesiology
- Vascular
- Lung
- Pain Management
- Cardiac



eBladder



Auto B-Line



Renal Blood Flow



Spleen Blood Flow



Umbilical Blood Flow



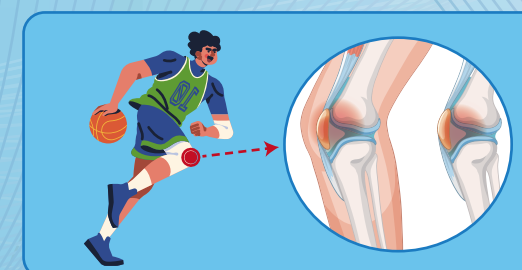
Fetus Spine



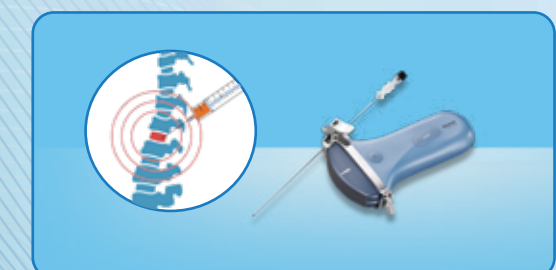
Emergency Medical Service



Ward Round



Sports Injury



Pain Management