

Provides Critical Testing
Anytime, Anywhere

i15 VET Veterinary Blood Gas and
Chemistry Analyzer



EDAN

animal care

i15 VET

Veterinary Blood Gas and Chemistry Analyzer

LAN/Wi-Fi connectivity



Build-in Printer and USB Storage



Printer



Cartridge



Interface

USB Storage



Power Switch



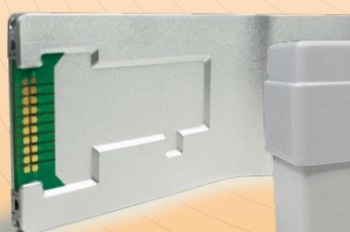
Traffic Lights



i15 trailer



i15 VET Quality Control System
Triple Guarantee the Result





- ## Easy, Quick and Convenient

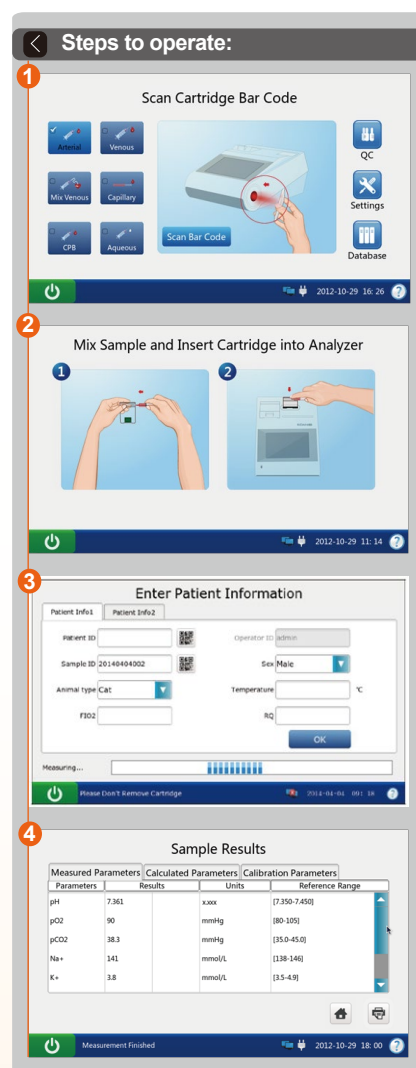
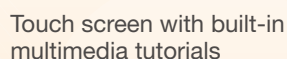
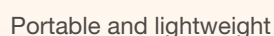
- ## Accurate and Reliable

- ## Flexible Data Management

- Acquire patients' information via barcode/QR code
- Up to 10,000 patient data storage
- 4 USB ports and LAN/WiFi for data management
- Optional data management software

Multi-parameter cartridge

- Multi popular time-sensitive parameters come in one cartridge, including ABG, electrolytes and metabolites
- Single-use cartridge avoids contamination
- Room temperature storage with long shelf-life



	pH	pCO ₂	pO ₂	Na ⁺	K ⁺	Cl ⁻	Ca ⁺⁺	Hct	Glu	Lac
Microsample BG3/BG3	●	●	●	●	●	●	●	●	●	●
Microsample BG8/BG8	●	●	●	●	●	●	●	●	●	●
Microsample BG4/BG4	●	●	●	●	●	●	●	●	●	●
Microsample BG9/BG9	●	●	●	●	●	●	●	●	●	●
Microsample BG10/BG10	●	●	●	●	●	●	●	●	●	●
Microsample BC4/BC4	●	●	●	●	●	●	●	●	●	●
Calculated values: cH ⁺ , HCO ₃ ^{3-act} , HCO ₃ ^{3-std} , BE(ecf), BE(B), BB(B), ctCO ₂ , sO ₂ (est), Ca ⁺⁺ (7.4), AnGap, tHb(est), pO ₂ (A-a), pO ₂ (a/A), RI, pO ₂ /FIO ₂ , cH ⁺ (T), pH(T), pCO ₂ (T), pO ₂ (T), pO ₂ (A-a)(T), pO ₂ (a/A)(T), RI(T), pO ₂ (T)/FIO ₂ , mOsm										

Parameter	Reportable Range	Resolution	Measurement Method
pH (pH units)	6.5 – 8.0	0.001	Potentiometric sensor
pO ₂ (mmHg)	10 - 700	0.1	Amperometric sensor
pCO ₂ (mmHg)	10 - 150	0.1	Potentiometric sensor
Na (mmol/L)	100 - 180	0.1	Potentiometric sensor
K (mmol/L)	2.0 - 9.0	0.01	Potentiometric sensor
Ca (mmol/L)	0.25 - 2.5	0.01	Potentiometric sensor
Cl (mmol/L)	65 - 140	0.1	Potentiometric sensor
Glu (mg/dL or mmol/L)	20 - 700 / 1.1 - 38.9	1 / 0.1	Amperometric sensor
Lac (mg/dL or mmol/L)	2.7 - 180.2 / 0.3 - 20	0.1 / 0.01	Amperometric sensor
Hct (%PCV or Fraction)	10 - 75 / 0.10 - 0.75	1% / 0.01	Conductance sensor

Specification

Throughput	Results in 1 minute after sample aspiration
Sample volume	140µl / 80µl
Quality control	3 or 5 levels QC, External electronic simulator
Display	7-inch color LCD Display, 800*480
Interface	4 x USB 2.0 host, 1 x RS232, WLAN
Input device	Touch screen and barcode scanner
Power supply	100~240VAC, 50/60Hz
Battery	4200mAh rechargeable lithium-ion battery, 50 samples continuous testing
Dimensions (W*H*D)	238*153*310 mm
Weight	3.65 KG
Operation Environment	10°C-31°C; %RH: 25%-80%; 70 -106.6 KPa

Global Headquarters:

Edan Instruments, Inc. | 15 Jinhui Road, Pingshan District, Shenzhen
518122 P.R. China | +86.755.26898326 | www.edan.com | info@edan.com

U.S. and Canada inquiries:

EDAN Diagnostics, Inc. | 9918 Via Pasar, San Diego, CA 92126
+1.858.750.3066 | www.edandiagnostics.com | edan-info@edandiagnostics.com

© Edan Instruments, Inc. All rights reserved. Features and specifications are subject to change without prior notice. No reproduction, copy or transmission may be made without written permission. Not all products or features are available in all countries, contact Edan for local availability.