

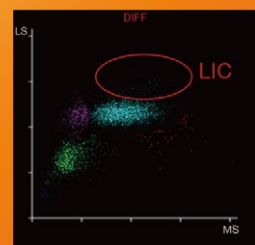


IMPROVE ACCURACY THAT ASSIST YOUR INSIGHTS

LIC

Large immature cells

If the animals get pneumonia, hemolysis, etc. LIC could be an indicator

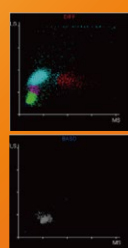


5-PART DIFF

10 DIFF parameters

4 2D scattergrams including 3*DIFF and 1*BASO

Clear boundaries for different clustering



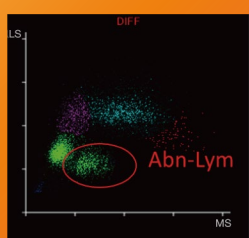
DIFF

BASO

ALY

Abnormal lymphocyte flagging

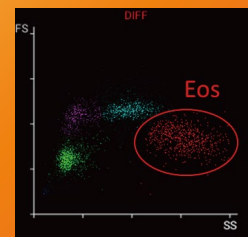
ALY could regard as a predictor for parasitization, allergy, etc



EOSINOPHILIA

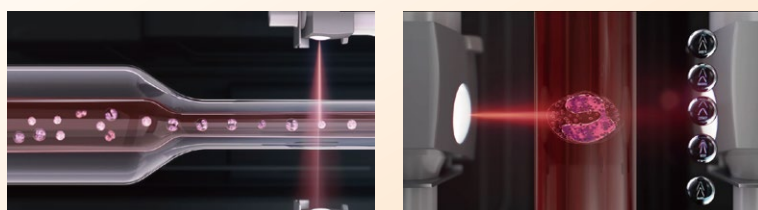
High specificity on eosinophil

Better performance on eosinophilia samples



TECHNOLOGY

Tri-angle laser and flow cytometry realize the better 5-part classification for WBC.



Specification

Parameters

25 reportable parameters: WBC, RBC, HGB, HCT, MCV, RDW-CV, RDW-SD, MCH, MCHC, PLT, MPV, PCT, PDW, PLCR, PLCC, LYM%, LYM#, MON%, MON#, NEU%, NEU#, EOS%, EOS#, BAS%, BAS#.

6 RUO parameters: ALY#, ALY%, LIC#, LIC%, NLR, PLR.

3 histograms: WBC, RBC, PLT

4 2D scattergrams: 3*DIFF, 1*BASO

Performance

Parameter	Linearity Range	Precision
WBC (10 ⁹ /L)	0-300	≤3.0% (3.5-7.0) ≤2.5% (7.01-15.0)
RBC (10 ¹² /L)	0-17	≤2.0% (3.5-4.5) ≤1.5% (4.51-10.0)
HGB (g/L)	0-250	≤1.5% (100-180) ≤5.0% (200-500)
PLT (10 ⁹ /L)	0-4000	

Principles

Tri-angle laser semiconductor laser, flow cytometry for WBC, DIFF, and BASO counting

Electrical impedance method for RBC, PLT counting

Cyanide-free reagent for HGB with colorimetric method

Sample Volume

Whole blood mode	16 µL
Pre-diluted mode	20 µL

Reagents

VD310 Veterinary Diluent: 10L/20L

VL600 Veterinary Lyse: 200mL

HC310/HC600 Cleaner: 50mL

Data Storage Capacity

100,000 results including results and histograms
60 QC files (100 data per file)

Dimension and Weight

501mm(L)*320mm(W)*502.5mm(H)
Weight: 29.3kg

Carryover

WBC, RBC, HGB ≤ 0.5%, PLT ≤ 1.0%

Throughput

60 T/H

Display

12.1 inch TFT color touch screen

Control and Calibrator

ED-60D, ED-CAL PLUS

Operating Environment

Temperature: 15°C-32°C;
Humidity: 30% RH-85% RH;
Air pressure: 70 kPa-106 kPa

Species

Cat, Dog, Horse, Sheep, Goat,
Cow, Pig, Rabbit, Rat, Mouse,
Monkey, Camel, Llama, Panda

Assist Animal Healthcare in EDAN Way

H60 Vet 5-Part Veterinary Hematology Analyzer



ENG-AnimalCare-H60 Vet
V1.4-20240511



Global Headquarters:

Edan Instruments, Inc. | 15 Jinhui Road, Pingshan District, Shenzhen
518122 P.R. China | +86.755.26898326 | www.edan.com | info@edan.com

U.S. and Canada inquiries:

EDAN Diagnostics, Inc. | 9918 Via Pasa, San Diego, CA 92126
+1.858.750.3066 | www.edandiagnostics.com | edan-info@edandiagnostics.com

© Edan Instruments, Inc. All rights reserved. Features and specifications are subject to change without prior notice. No reproduction, copy or transmission may be made without written permission. Not all products or features are available in all countries, contact Edan for local availability.



5-Part Veterinary Hematology Analyzer



DETAILS THAT EASE YOUR WORK

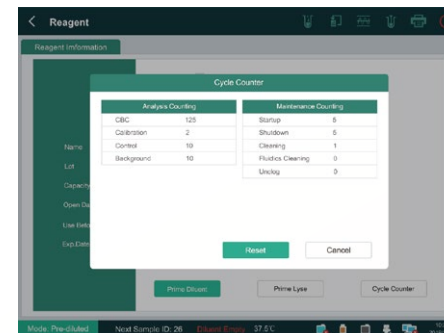
H60 Vet with elegant design aims to simplifying users' workload and giving fancy experience. 12.1 inch colorful touch screen makes views more straightforward. Mini package reagents with longer shelf life make sure every reagent is actually used up.

USER-ORIENTED WITH INTUITIVE SYSTEM

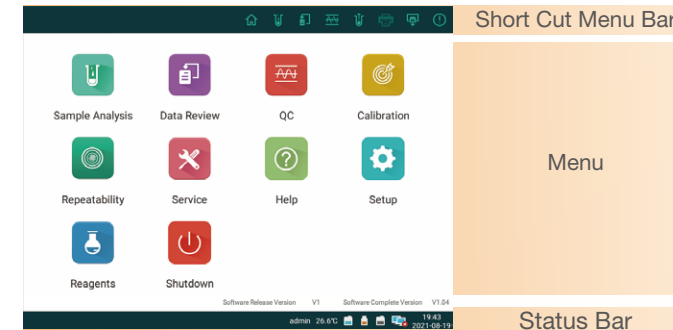
Its Android-based system has a similar experience as a smartphone to use. Different set-up views, each optimized for various user situations, facilitate routine use. Historical result display is also supported.

[illegible]

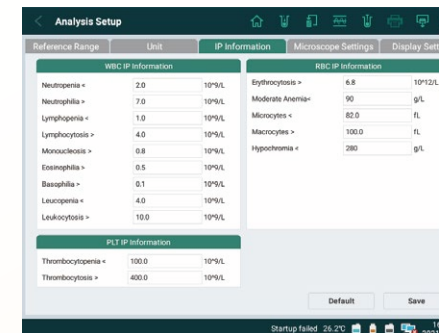
Support historical result display



Analysis recording via cycle counter



Android-based operation system



Function access within 2 steps



2 routine reagents with
180-day open shelf life



Support venous and pre-diluted mode

MORE SPECIES
LESS MAINTENANCE

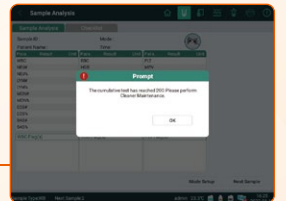
Supportable species

Cat, Dog, Horse, Sheep, Goat, Cow, Pig, Rabbit, Rat,
Mouse, Monkey, Camel, Llama, Panda



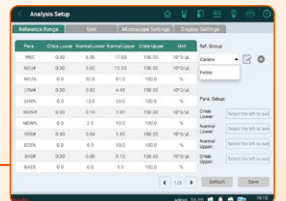
Simplified maintenance

Every 50 tests need to be maintained once, system automatically reminds user



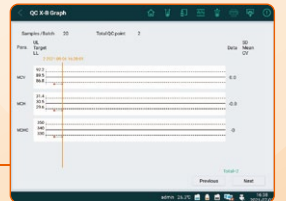
Customized animals

H60 Vet supports unlimited customized canine and feline species



QC & CAL

3 level QC with L-J graph and X-B graph
Support fresh blood calibration and calibrator



12.1 inch colorful touch screen

16 μ L test volume