

Deliver Reliable Results with Maximum Uptime

H60 Hematology Analyzer



DETAILS THAT LIGHTEN YOUR WORK



Reagent management via RFID card secure your reagent business



12-inch colorful touch screen



Two routine reagents to support test



16 microliter of sample aspiration

INTUITIVE SYSTEM THAT SIMPLIFIES YOUR HANDLING

The image displays four screenshots of the H60S interface with annotations:

- Short Cut Menu Bar:** A horizontal bar at the top of the main screen containing icons for Menu, Sample Analysis, Data Review, QC, Calibration, Reagent, Service, Help, Settings, Repeatability, and Shutdown.
- Menu:** A central screen with a grid of icons for Sample Analysis, Data Review, QC, Calibration, Reagent, Service, Help, Settings, Repeatability, and Shutdown.
- Calibration:** A screen showing a table of calibration data with columns for No, Index, WBC, L%WBC, MCV, SWCV, and Peak of Particles. A graph of the peak is shown on the right.
- Data Review:** A screen showing a table of patient results with columns for Patient Name, Result, Unit, and Reference Range. A graph of the results is shown on the right.
- Reagent:** A screen showing a table of reagent information with columns for Reagent Name, Lot, and Expiry Date.

Annotations include:

- "Function access within 2 steps" pointing to the Calibration screen.
- "Reference range bar indication" pointing to the Data Review screen.
- "Analysis recording via cycle counter for easy cycle summary and maintenance monitor" pointing to the Reagent screen.

The system that stands out

The H60 features a whole set of user-oriented functions that are hard to find elsewhere. Its android-based system has a similar experience as a smartphone – pleasure-to-operate and easy-to-use. You can get to any functionality within two steps. The 12-inch colorful touch screen makes working with H60S and viewing its results exceptionally straightforward.

Outstanding graphic interface

The user interface is undoubtedly the most visible and best-appreciated feature of the H60 series. Different set-up views, each optimized for various user situations, facilitate routine use. The most common include a sample view showing classic graphs and all parameters within one page. The other sample view features the most practical reference bar display that indicates the results' status. The comprehensive information on the short-cut menu bar and status bar give you fast access to any primary function.

Communicate and print like never before

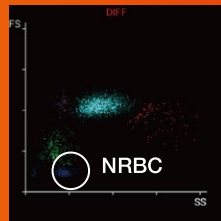
An integrated workstation with the HIS and LIS connections further streamlines analysis and reporting. Standardized HL7 protocol and storage capacity extends up to 100,000 easily accessible sample files. The print function has the most flexible options that allow you to print individual sample results and control tests, L-J graphs, or QC lists with any parameters selection.

SENSITIVE FLAGGINGS THAT ASSIST YOUR INSIGHTS

NRBC

NRBC PRESENCE FLAGGING

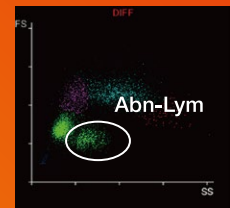
REMINDED TO CORRECT WHITE BLOOD CELL COUNTS BY SMEAR



ALY

ABNORMAL LYMPHOCYTE FLAGGING

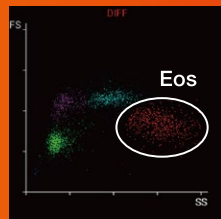
SUSPICIOUS OF VARIANT LYMPHOCYTES AND MALIGNANT LYMPHOCYTES



EOSINOPHILIA

HIGH SPECIFICITY ON EOSINOPHIL

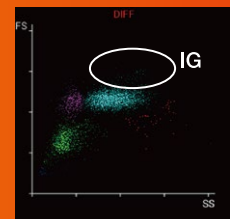
GREAT DIFFERENTIATION ON EOSINOPHILIA SAMPLES



IG

IG PRESENCE FLAGGING
ASSESSMENT OF SEPSIS AND INFLAMMATION

COMPRISED OF METAMYELOCYTES, MYELOCYTES & PROMYELOCYTES

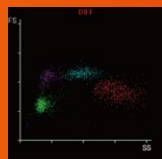


DIFF

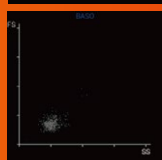
10 DIFF PARAMETERS

HIGH CLUSTERING OF 5-DIFF

TWO 2D SCATTERGRAMS
HIGH SENSITIVITY FLAGGING



DIFF



BASO





USER

Design with user-oriented

SPACE

Design to suit your surroundings

OUTLINE

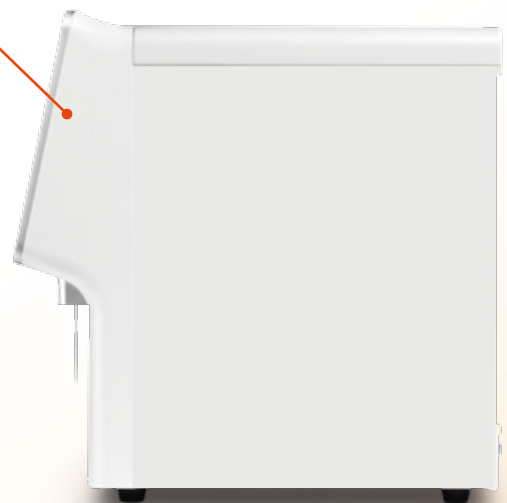
Design to simplify your operation

SERIAL

Different model tailored to your needs

LIFESPAN

Design for long product life



Specification

Parameters NEW		
25 reportable parameters:	WBC, Lym%, Mon%, Neu%, Bas%, Eos%, Lym#, Mon#, Neu#, Eos#, Bas#, RBC, HGB HCT, MCV, MCH, MCHC, RDW-CV, RDW-SD, PLT, MPV, PDW, PCT, P-LCR, P-LCC.	
8 research parameters:	LIC%, LIC#, ALY%, ALY#, NRBC% , NRBC# , NLR,PLR	
3 histograms:	WBC , RBC, PLT	
1 3D scattergram:	DIFF	
4 2D scattergram:	DIFF, BASO	
Performance		
Parameter	Linearity Range	Precision (CV%)
WBC (10 ⁹ /L)	0.0-500.0	≤3.0% (3.50-7.00) ≤2.5% (7.01-15.00)
RBC (10 ¹² /L)	0.0-8.5	≤1.5% (3.5-6.5)
HGB (g/L)	0-250	≤1.5% (100-180)
PLT (10 ⁹ /L)	0-4000	≤5.0% (100-500)
MCV (fL)		≤1.0% (70-120)
Principles		Throughput
Tri-angle laser flow cytometry analysis for WBC, DIFF and BASO counting Electrical impedance method for RBC, PLT counting Cyanide-free reagent for HGB with colorimetric method		60 samples per hour
Sample Volume		Interface
		12.1 inch colorful touch screen
		Control and Calibrator
Whole blood mode	16 μL	ED-60D, ED-CAL PLUS
Capillary whole blood mode	16 μL	
Pre-diluted mode	20 μL	
Reagent		Data Storage Capacity
		100, 000 results including results and histograms 60 QC files (100 data per file)
Operating Environment		Dimension and Weight
		501(D)×320(W)×502.5(H) Weight: 29.3kg
Temperature: 15°C~32°C; Humidity: 30% RH~85% RH; Air pressure: 70 kPa~106 kPa		

Global Headquarters:

Edan Instruments, Inc. | 15 Jinhui Road, Pingshan District, Shenzhen
518122 P.R. China | +86.755.26898326 | www.edan.com | info@edan.com

U.S. and Canada inquiries:

EDAN Diagnostics, Inc. | 9918 Via Pasar, San Diego, CA 92126
+1.858.750.3066 | www.edandiagnostics.com | edan-info@edandiagnostics.com

© Edan Instruments, Inc. All rights reserved. Features and specifications are subject to change without prior notice. No reproduction, copy or transmission may be made without written permission.
Not all products or features are available in all countries, contact Edan for local availability.